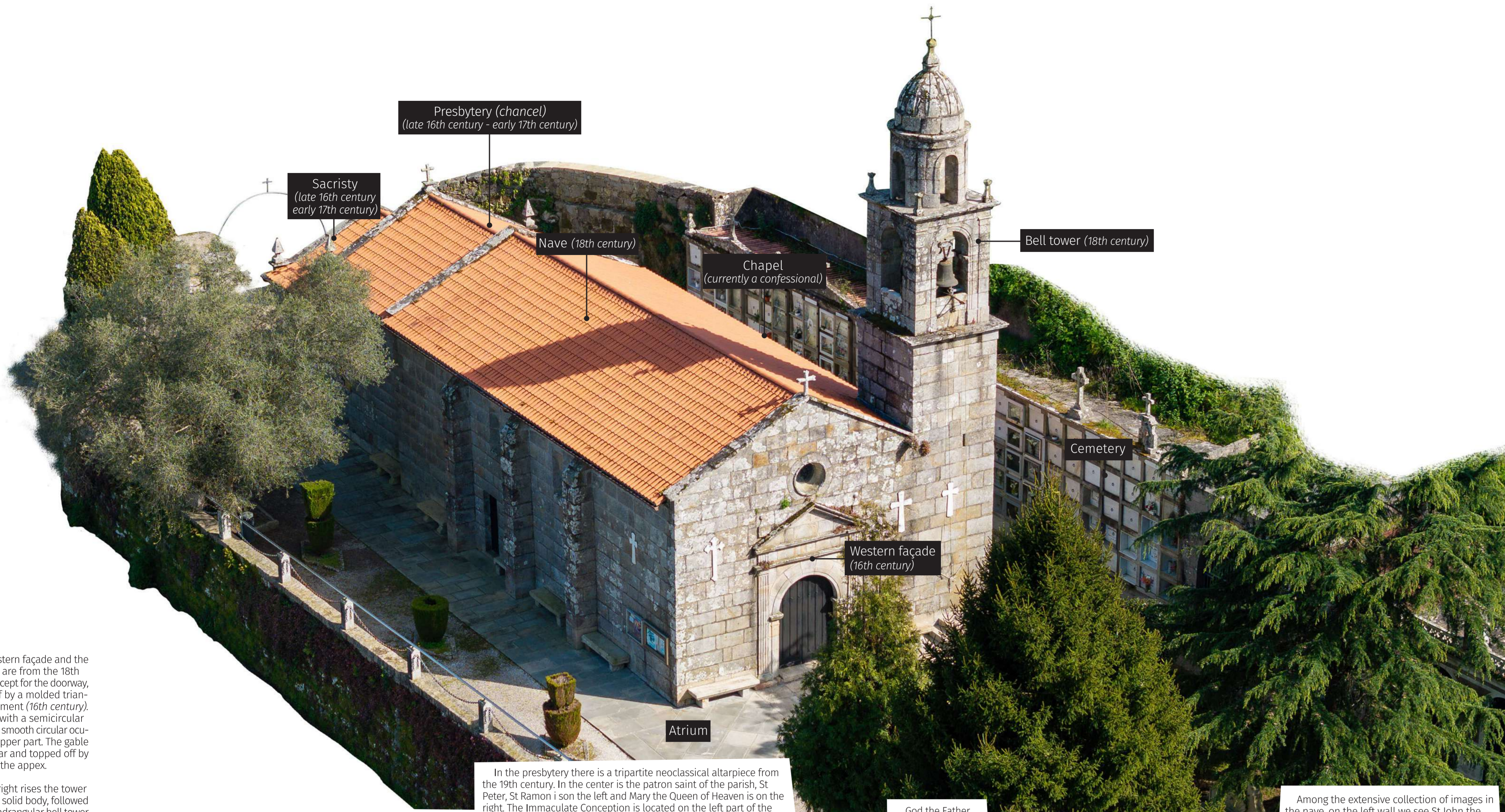


PARISH CHURCH OF ST PETER OF VILALONGA



St Peter

Temple with two well-defined construction phases, the earlier one, from the late 16th century and early 17th century, corresponds to the presbytery, the sacristy and the doorway of the western façade. The walls of the nave, the tower and the north, south and west façades date back to the 18th century (*baroque style*).

It has a single rectangular nave divided into four sections by three semicircular transverse arches. The presbytery has a rectangular shape and a quadripartite ribbed vault; in its north and south walls there are two openings from old burial sites, the barrel-vaulted sacristy is located to the east, behind some doors on the main alterpiece.

Its simple main façade shows a semicircular arch portal and, to the right, a Baroque bell tower topped off with a pinnacle and an iron cross.

In the church there was a canopy of which three panels are now in the Museum of Pontevedra, donated by Don Albino Patiño to the Archaeological Society of Pontevedra in 1895.



The Parish of Vilalonga
 Area: 5,4 Km²
 Population: 3.018 inhabitants (2022)

The western façade and the bell tower are from the 18th century, except for the doorway, topped off by a molded triangular pediment (16th century). The door, with a semicircular arch, has a smooth circular oculus in its upper part. The gable is triangular and topped off by a cross at the apex.

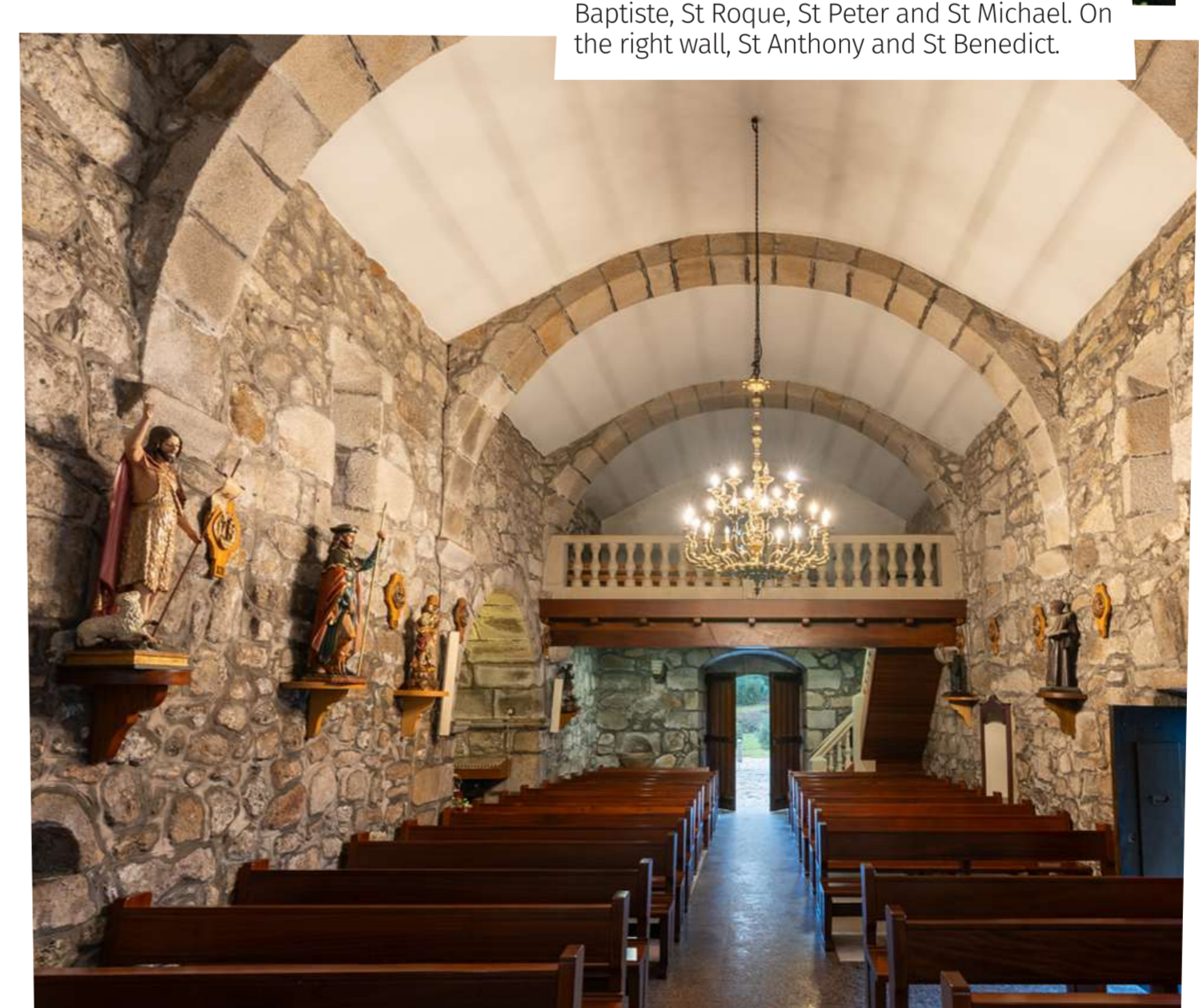
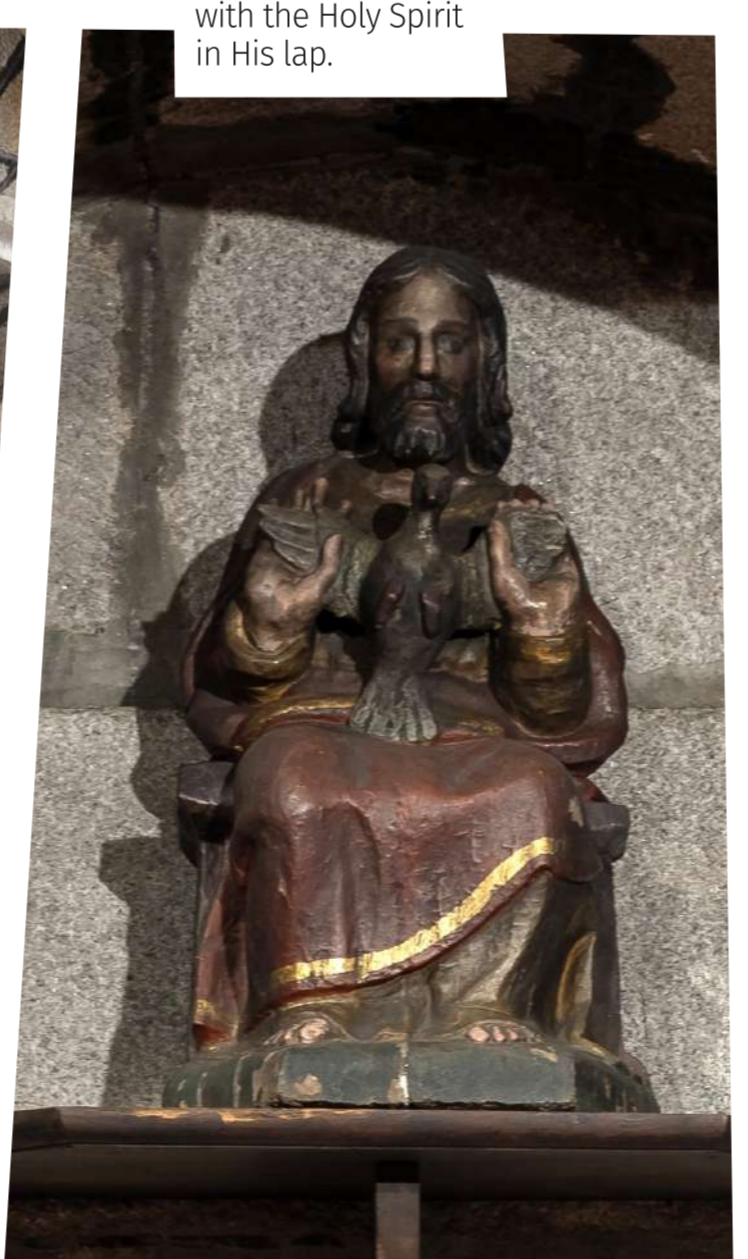
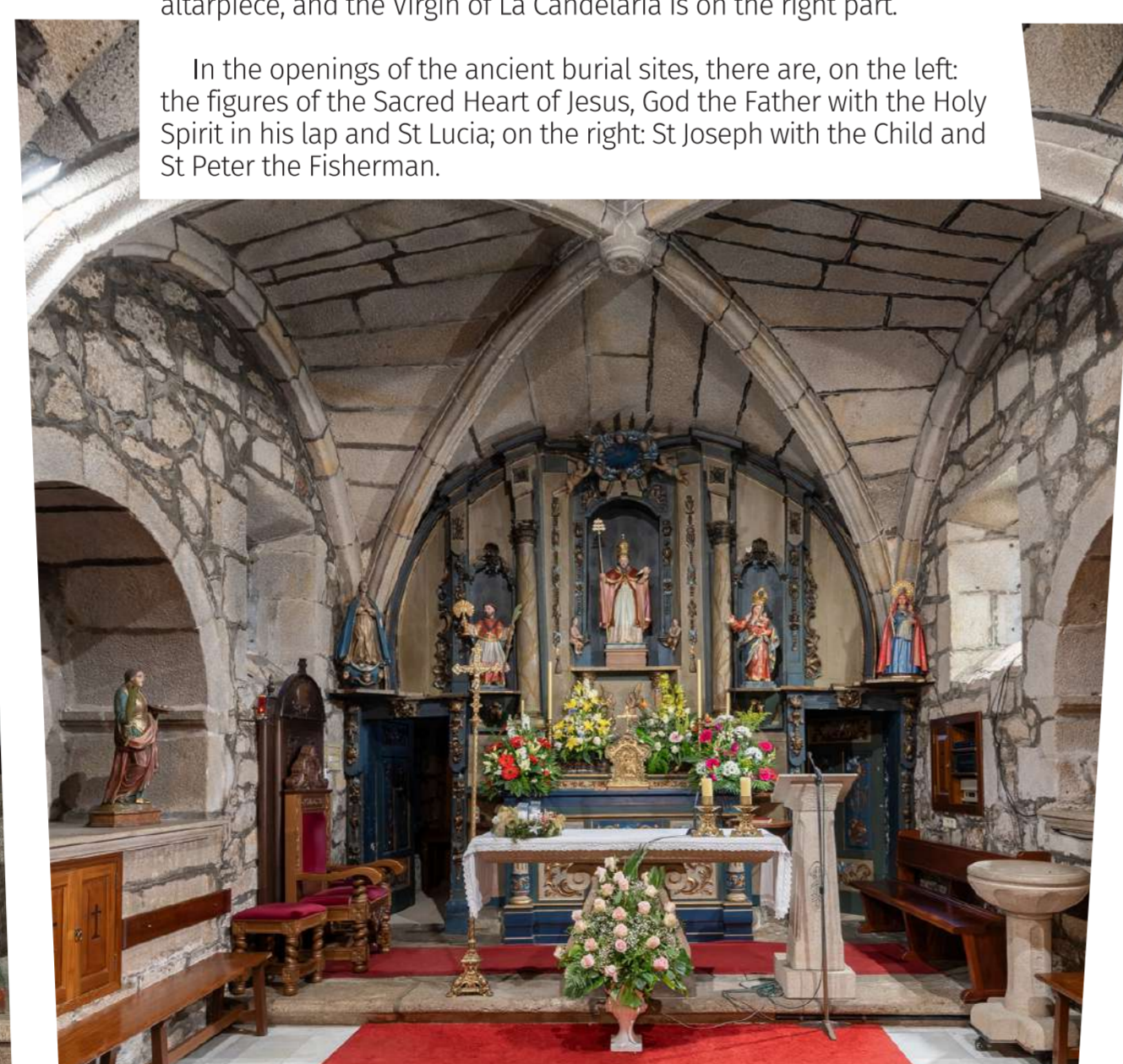
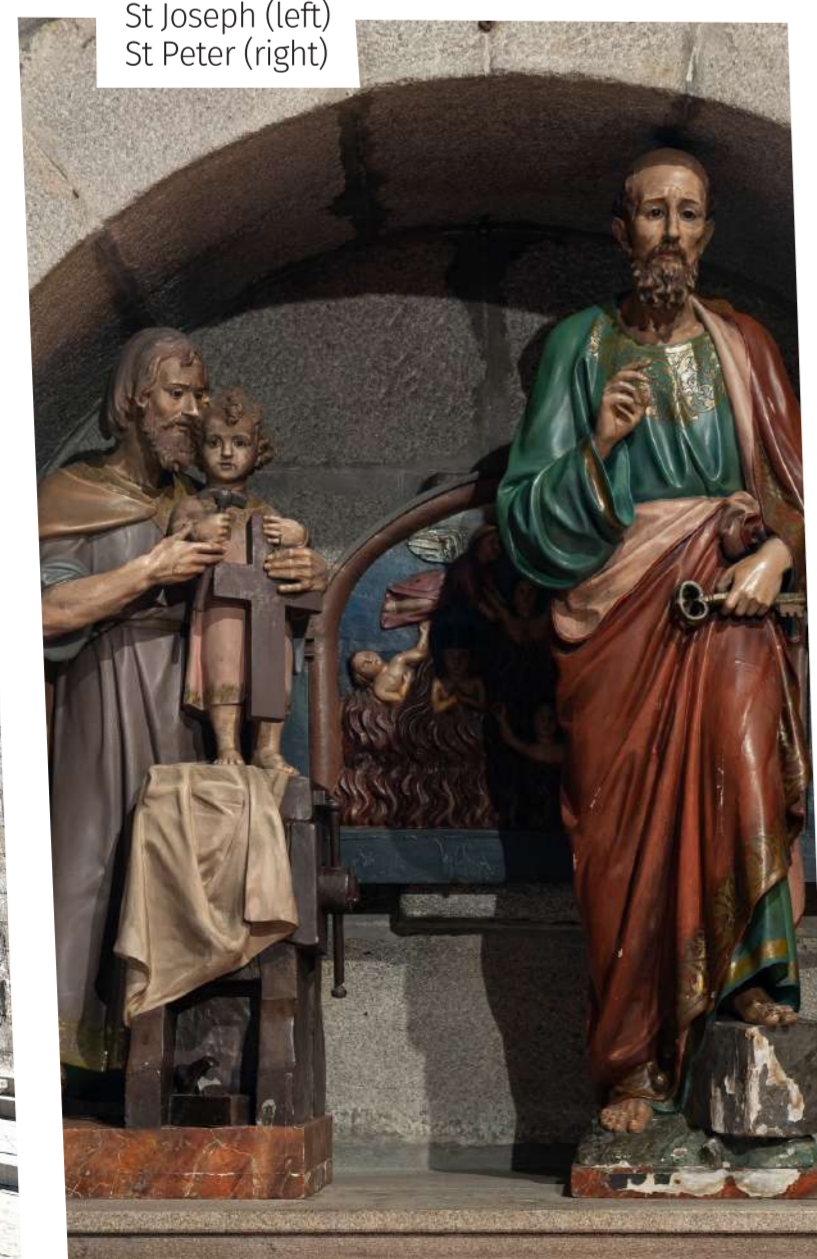
To the right rises the tower with a first solid body, followed by the quadrangular bell tower on each side and culminated with a supported dome.

In the presbytery there is a tripartite neoclassical altarpiece from the 19th century. In the center is the patron saint of the parish, St Peter, St Ramon i son the left and Mary the Queen of Heaven is on the right. The Immaculate Conception is located on the left part of the altarpiece, and the Virgin of La Candelaria is on the right part.

God the Father with the Holy Spirit in His lap.

Among the extensive collection of images in the nave, on the left wall we see St John the Baptist, St Roque, St Peter and St Michael. On the right wall, St Anthony and St Benedict.

In the openings of the ancient burial sites, there are, on the left: the figures of the Sacred Heart of Jesus, God the Father with the Holy Spirit in his lap and St Lucia; on the right: St Joseph with the Child and St Peter the Fisherman.



The place name "*Vilalonga*" comes from «*vilar*» or elongated village. There are over 3.770 parishes in Galicia (666 in the province of Pontevedra) of which 313 have St Peter as their patron saint. In the ranking of most frequent dedications, St Peter occupies second place in Galicia, with St Mary in first place.

Next to the parish church, in the area of O Rebel, there are two manor houses, both from the 16th-17th centuries. Pazo de los Pardo, which has a small neoclassical chapel, and Pazo del Rebel, today functioning as a hotel. The parish church is deeply linked to the lords of the Pazo del Rebel. In Gondar is the old chapel in honour of St Thomas. It was once the church of the old parish of Gondar which is now annexed to the parish of Vilalonga.

The Parish of St Peter of Vilalonga has thirty rural communities: A Arnosa, A Bouza, A Bruñeira, A Costiña, A Fianteira, A Lomba, A Roza Vella, A Salgueira, A Touticeira, A Xunca Branca, Altamira, Gondar de Abaixo, Gondar de Arriba, Gondariño, Lagarei, O Carballal, O Carballo, O Castro, O Cruceiro, O Empalme, O Freixo, O Igrexario, O Outeiro, O Rebel, Peai, Pedreiras, Piñeiros, Rouxique, Tourada and Vilar. The main village is Vilalonga, the third largest one in the municipality.

Environmentally speaking, Vilalonga's coast, bathed by the Arousa Estuary, is included in the Natura 2000 Network as Ons-O Grove Complex SAC (*Special Areas of Conservation*) and as Intertidal Complex SPA for birds of Umia - O Grove, A Lanzada, Punta Carreirón and Lagoa Bodeira. (SPA: *Special Protection Area*) as well as in the international network of protected wetlands (RAMSAR).